



St. Johns County School District
Exceptional Student Education
40 Orange Street
St. Augustine, FL 32084

Exceptional Student Education

Gifted Services

▶ Gifted Education Referral Process

Referrals for Gifted are generally made by classroom teachers or may come from the Parent/Guardian(s).

Parent/Guardian(s) interested in beginning the referral process for any Exceptional Student Education program must be residents of St. Johns County. Student files **cannot** be processed without proof of residency in St. Johns County. Contact Students Services at 547-7879 for assistance or questions regarding residency.

All student referrals for gifted evaluations must be processed at their zoned district school. Parent/Guardian(s) should use the following guidelines to request their student be referred for an evaluation for gifted:

If you live in St. Johns County and your child attends a public school, private school, or is home-schooled, contact the Guidance Department at your home zoned school and request that your child be screened for gifted services. There is a timeline that the district schools follow for gifted referrals and testing.

Please visit the district web site for the current timeline/ deadlines for gifted referrals.

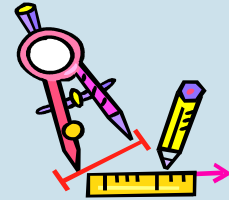


Joseph G. Joyner, Ed. D.
Superintendent

Lisa Bell, Director
Exceptional Student
Education

Phone: 904-547-7672
Fax: 904-547-7687

Thank you for your interest in St. Johns County's Gifted Educational Programs. Both the community and the school district are proud of the quality of gifted program options offered for students. We provide a continuum of services to meet the individual academic needs of gifted learners.



▶ Gifted Service Delivery Models

Full-time—Students receive curriculum in a classroom with all other gifted students by a certified gifted instructor(s). This program option focuses on all aspects of gifted academics including acceleration, social/emotional and enrichment.

Blended—Students are placed in a classroom with other gifted children and a teacher qualified to work with gifted students. The class will have a heterogeneous mix of abilities for the remainder of the class roster.

Resource—Students are pulled from the general education classroom to receive specialized instruction from a certified teacher of the gifted. This program option focuses on enrichment activities.

Consultation— A teacher of the gifted works with general education teacher(s) to assist them in meeting identified needs of the gifted learner. Materials and other resources are made available to the general education teacher(s) by a teacher who is gifted certified.

*Please note that **not** all services are available at every school.*

▶ Gifted Screening

Any St. Johns County student may be referred for a gifted screening to determine the need for further evaluation. Students who meet the minimum score on the intelligence screening instrument may be referred for a full evaluation. Any student with a current psychological evaluation that reports an intelligence quotient (IQ) that meets the IQ portion of the state criteria for gifted is exempt from gifted screening and may be referred by the school for gifted eligibility determination.

Gifted Eligibility Determination

The following 3 items are the minimum required information before gifted eligibility may be determined:

1. Standardized test of intelligence This instrument must be administered by a certified/licensed school psychologist. The full scale or composite intelligence quotient (IQ) must be included in this report. Criteria for eligibility requires an IQ score of two standard deviations above the mean on an individually administered standardized test of intelligence.

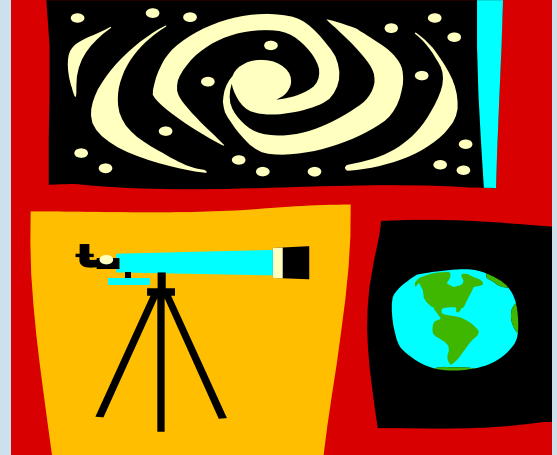
2. Gifted Characteristics Check List This form is to be completed by at least one of your child's current academic teachers. Your St. Johns County district school will provide your child's teacher with the form. A majority of the gifted characteristics are required to be evident for the student to be found eligible for services

3. Need for a special program is evident. Need is established by review of student report card, grades, scores on individual and standardized achievement test, review of social/emotional needs, and scores on the gifted characteristics scales.

All psychological and academic achievement evaluations will be done through St. Johns County school psychologists for St. Johns County students. Private evaluations may be obtained at the parent/guardian's own expense. Reports from private psychologists may be submitted as a part of the required documentation for gifted eligibility. Private evaluation protocols may be subject to review/verification by School Board staff.

Collection and submission of all required documentation must be completed by the county deadline.

It is the responsibility of the St. Johns County schools for collecting all required documentation if the student is enrolled in the public school. If the child attends a private school or is home-schooled, the parent is responsible for submitting all of the necessary forms by the appropriate dates.



▶ Transfers: Within the State

Students can be automatically placed if they have;

1. A current individual education plan (IEP) or educational plan (EP) which lists gifted placement.
2. MIS data verified by paperwork or by a phone call to the sending county's ESE records department that the student was identified and eligible for Gifted Services.

▶ Out of State

Students transferring from outside the state of Florida may or may not be eligible for the gifted programs in St. Johns County. Florida has a program for **intellectually** gifted students only. Many other states have programs for academically talented students which may not meet Florida requirements for eligibility. Students who have been identified as gifted from another state may need additional assessment before the county can determine eligibility.

Questions?
Contact:
Tina Kennon
Program Coordinator
(904) 547-7546
kennont@stjohns.k12.fl.us