

# Dress Code

## DO'S & DON'TS

**DON'T**

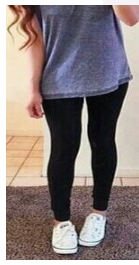


Skirts, shorts, and dresses must be at least fingertip length.

**DO**



**DO**



Leggings are allowed **ONLY** if the accompanying top is long.

**Don't**



**DON'T**



Low-cut/revealing tops are not permitted.

**DON'T**

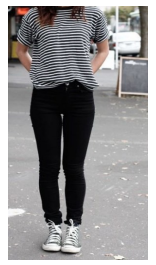


Shirts must have sleeve that cover the shoulder and midriff area. Discriminatory, profane, tobacco related, violent messages/images are not allowed. "Cold-shoulder" tops must be "three fingers wide" on the shoulder.

**DO**



**DO**

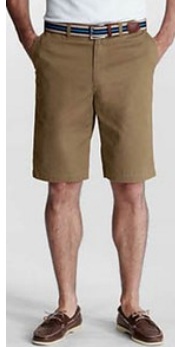


Pants should be worn at the waist, be proper length, and rips, tears, and holes must be finger tip length if showing exposed skin.

**DON'T**



**DO**



**DO**



**DO**



**DON'T**



Pants must be worn at waist and free of rips, tears, and holes must be finger tip length if showing exposed skin.

Jewelry may be worn, with the exception of heavy chains (including wallet chains), large cuff bracelets, silly bands, and rings with sharp points.

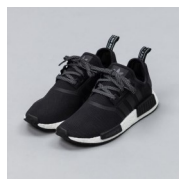
**DON'T**



**DON'T**



**DO**



**DO**



**DON'T**



**DO**



Footwear must have backs and cannot be roller shoes, platform shoes, flip flops, slippers, high heels or steel-toed shoes.

Accessories such as gloves, hats, sunglasses must be removed when entering the building and put away for the day.